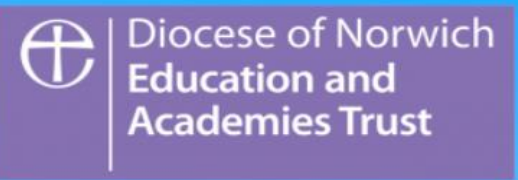




# Lyng Church of England Primary Academy

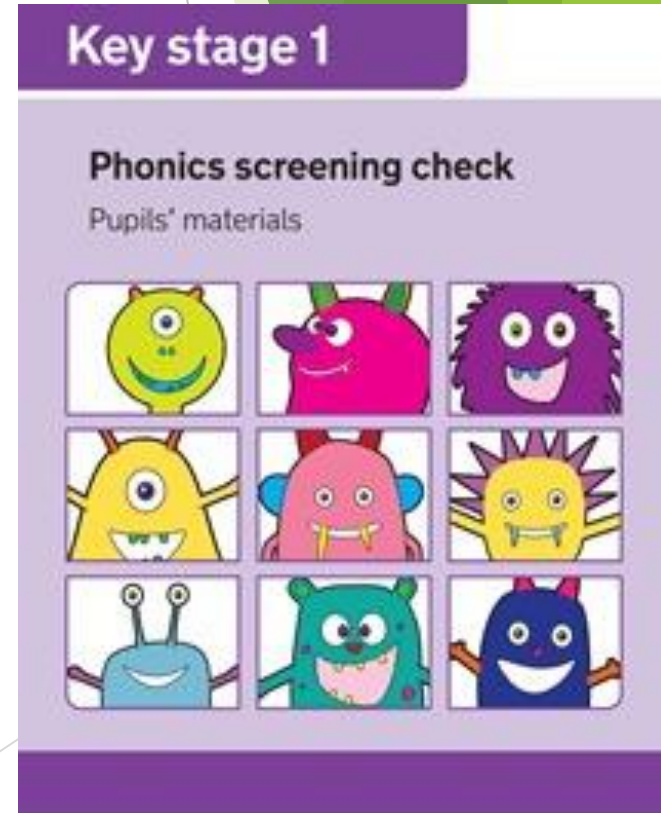
Learning, Growing, Achieving Together



# Phonics Screening Year 1 2024/2025



# Miss Allen



# Phonics Screening...

- When does it take place?
- Where does it take place?
- What does it look like?
- Who does it?
- How is it done?
- Why is it done?



# Phonics Screening...

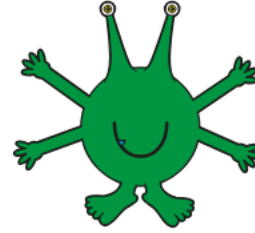
- When does it take place?
- Where does it take place?
- What does it look like?
- Who does it?
- How is it done?
- Why is it done?



# What does it look like?

- 20 real words
- 20 pseudo words
- Practice sheet
- Progressively gets harder as the test goes on.
- CVC words
- CVCC words
- CCVC words

fod



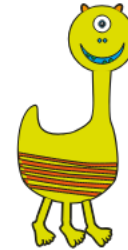
chip

bep



hill

splet



sequins

strave



whirling

# How is it done?

- Completed 1:1 with the class teacher.
- Takes between 4-9 minutes to complete.
- Children are encouraged to use special friends- fred talk-read the word

fod



chip

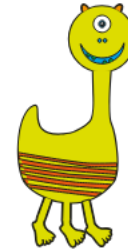


bep



hill

splet



sequins

strave



whirling

# How can you help at home?

- Practise sounds sent home
- Read daily with your child
- Practise reading both real and pseudo words.
- Look at past papers to see type of words which may come up.

# Remember....

- Special friends
- Fred talk
- Read the word

# Useful websites/documents

- How to say the sounds



- Past papers



- Phonics games





# Final thoughts..

- Please don't panic.
- Practise, practise, practise
- Make it fun!

# Questions...

