

## Lyng Church of England Primary Academy

Executive Headteacher: Mrs Shannon O’Sullivan

Wensum Road, Lyng, Norwich, NR9 5RJ

Tel: 01603 872828 Email: [office@lyng.norfolk.sch.uk](mailto:office@lyng.norfolk.sch.uk) Web: [www.lyng.norfolk.sch.uk](http://www.lyng.norfolk.sch.uk)

### **NEWSLETTER 7<sup>th</sup> MARCH 2025**

Dear Parents, Carers and Friends of the Nightingale Federation,

We have had a busy couple of weeks with lots of exciting things happening in school and have also been making the most of the wonderful spring sunshine!

Last week we were extremely lucky to have had a visit from Star Lincs and their Mobile Planetarium and are very grateful once again to FOLS for funding the event. All year groups from Reception to year 6 took part and the children enjoyed learning about the planets, stars, astronauts and satellites. All year groups were extremely curious and had the opportunity to ask lots of questions.

This week we have enjoyed World Book Day and as usual, the children came dressed in some amazing costumes! Thank you for all your support in making this a memorable day for the children. Please see some of our photos below.

We also had a visit on Wednesday this week from Mr Nourish, who spoke to the children during lunch time about healthy eating. They learned some interesting facts about food, the benefits of healthy eating and exercising, 5 a day – so many different fruit and veg to choose from – and the chance to ask questions!

Following on from this, next week Nourish Catering will be running their popular “Eat Them to Defeat Them” campaign. Designed to encourage children to try different vegetables, we are hoping all the children will join in and have some fun along the way. Please see further details on our notices page.

Have a wonderful weekend and make the most of the sunshine while it lasts!





## Lyng Church of England Primary Academy

Executive Headteacher: Mrs Shannon O'Sullivan

Wensum Road, Lyng, Norwich, NR9 5RJ

Tel: 01603 872828 Email: [office@lyng.norfolk.sch.uk](mailto:office@lyng.norfolk.sch.uk) Web: [www.lyng.norfolk.sch.uk](http://www.lyng.norfolk.sch.uk)

## Notices and Reminders

### Parents Evenings

Booking sheets for parents evenings taking place on Tuesday 18<sup>th</sup> and Wednesday 19<sup>th</sup> are now available in the parent shelter. Please make sure you book your appointment if you have not already done so.

### Eat Them to Defeat Them

Our school caterer, Nourish, will be running their campaign to encourage children to eat more vegetables next week. Your child will be bringing home a pack today, which includes a sticker chart. Children can collect stickers at lunchtimes next week, each time they try one of the featured vegetables.



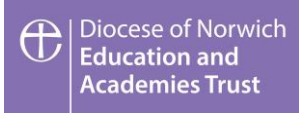
### Practical Parenting Sessions

Following the email that was sent out earlier this week, please remember to book your place if you would like to attend these sessions, via the school office.

These sessions will be delivered by the Schools and Communities Team and will focus on ways to support children to communicate and self regulate, use of limited choices and removing the power of negative behaviour.

The sessions will take place 1pm-3pm at school on

Wednesday 19<sup>th</sup> March, 26<sup>th</sup> March and 2<sup>nd</sup> April



## Lyng Church of England Primary Academy

Executive Headteacher: Mrs Shannon O'Sullivan

Wensum Road, Lyng, Norwich, NR9 5RJ

Tel: 01603 872828 Email: [office@lyng.norfolk.sch.uk](mailto:office@lyng.norfolk.sch.uk) Web: [www.lyng.norfolk.sch.uk](http://www.lyng.norfolk.sch.uk)

Norfolk County Council

Local First Inclusion



### SEND Parent Cafe

Thursday 20<sup>th</sup> March 2025

at 2.15 to 3.15pm

Lyng Primary Academy

Warm and welcoming atmosphere where you can share experiences, seek advice and offer support to one another. There will be representatives from the Schools and Community Team, Community and Partnerships Team, SENDIASS and EPSS.

If you would like to attend, please contact Mrs Smith (SENDCo) via the school office.

We will be sharing information on school support plans and the SEN Information Report.

**JOIN US FOR**

**COMIC RELIEF**

RED NOSE DAY 2025  
FRIDAY 21ST MARCH

**JOKES**  
SEND US YOUR BEST JOKE S AND WE WILL SHARE AS MANY AS WE CAN!

**DRESS UP**  
MAKE A DONATION USING OUR SCHOOL'S JUSTGIVING PAGE AND DRESS UP IN RED, COMIC RELIEF THEMED CLOTHING OR AS A SUPERHERO!

SCAN THE QR CODE BELOW TO MAKE A DONATION



---

## Lyng Church of England Primary Academy

Executive Headteacher: Mrs Shannon O'Sullivan

Wensum Road, Lyng, Norwich, NR9 5RJ

Tel: 01603 872828 Email: [office@lyng.norfolk.sch.uk](mailto:office@lyng.norfolk.sch.uk) Web: [www.lyng.norfolk.sch.uk](http://www.lyng.norfolk.sch.uk)

### Shining Lights

#### Cherry Class

Bonnie is our Shining Light of the Week for her amazing story telling skills during our learning about Goldilocks and the Three Bears.

#### Willow Class – Year 1

Ailish is our Shining Light of the Week for being a kind, caring friend to everybody in Willow class. She always puts in 100% effort and is a pleasure to be around!

#### Willow Class – Year 2

Arthur is our Shining Light of the Week for actively participating in all lessons. He has tried hard and shown great determination towards his learning!

#### Rowan Class – Year 3

William P- For fantastic effort with his handwriting.

#### Rowan Class – Year 4

William O- for fantastic team leadership when making periscopes in science.

#### Oak Class – Year 5

Orla is our Shining Light of the Week for her excellent contributions during our newspaper writing unit, all about the events of our class novel, Floodland.

#### Oak Class – Year 6

Elliot is our Shining Light of the Week for his both his excellent newspaper writing, reporting on events from Floodland and his engagement and contributions during our Global Challenges topic.



## Lyng Church of England Primary Academy

Executive Headteacher: Mrs Shannon O'Sullivan

Wensum Road, Lyng, Norwich, NR9 5RJ

Tel: 01603 872828 Email: [office@lyng.norfolk.sch.uk](mailto:office@lyng.norfolk.sch.uk) Web: [www.lyng.norfolk.sch.uk](http://www.lyng.norfolk.sch.uk)

### OUR KEY LEARNING QUESTIONS OF THE WEEK

**Willow Class:** How has air travel changed over time?

**Rowan Class:** Can you find out what sort of food Italian people eat?

**Oak Class:** Can you explain what challenges the world is currently facing in a changing climate?

### WOW MOMENTS!

**Rupert in year 2** took part in his club's gymnastics competition and was awarded 3 silvers and 1 gold. He has now qualified for the regional gymnastics competition. Well done Rupert!

**Please remember to continue to send in your WOW moments for achievements out of school:**

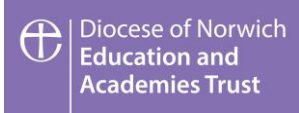
<https://forms.gle/q6MZXdmzvtNHvJp19>

### OUR LEARNING THIS WEEK.....

#### Cherry Class

We have been enjoying the beautiful weather in Cherry class this week, with lots of time spent outside. The children have been reading some pancake words, telling the story of Goldilocks and the Three Bears using props, (after discovering a porridge shaped mess in our class), and loved dressing up for World Book Day!





## Lyng Church of England Primary Academy

Executive Headteacher: Mrs Shannon O’Sullivan

Wensum Road, Lyng, Norwich, NR9 5RJ

Tel: 01603 872828 Email: [office@lyng.norfolk.sch.uk](mailto:office@lyng.norfolk.sch.uk) Web: [www.lyng.norfolk.sch.uk](http://www.lyng.norfolk.sch.uk)

### Willow Class

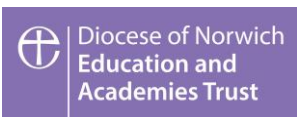
This week we have been celebrating World Book Day. The children all looked fabulous in their costumes and it was great to hear about everyone's favourite book. In English we have been writing animal riddles and we can not wait to read these out to Mrs Rudd. In Science we have been looking at different animal groups and in Forest School we looked at habitats.



### Rowan Class

Rowan class has had a lovely week celebrating World Book Day. On this special day we discussed our favourite books and what makes a good book. In science, we made periscopes. In English we have been learning how to write a non-chronological report and in maths we have continued to learn about fractions.





## Lyng Church of England Primary Academy

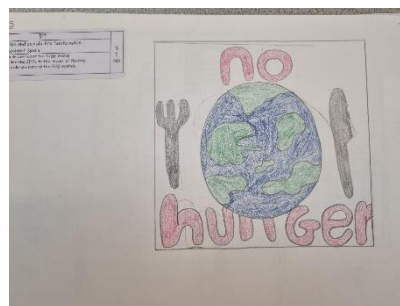
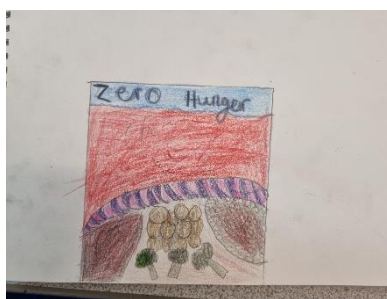
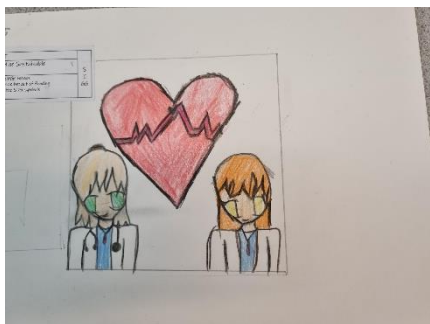
Executive Headteacher: Mrs Shannon O'Sullivan

Wensum Road, Lyng, Norwich, NR9 5RJ

Tel: 01603 872828 Email: office@lyng.norfolk.sch.uk Web: www.lyng.norfolk.sch.uk

### Oak Class

Year 5 took part in Bikeability training this week and we are pleased to say that all those that took part passed the course. In Maths we have been learning about multiplying and dividing decimals and in DT, we have talked about the importance of building flood proof houses and the impacts that flooding can have on communities. Please see some of the fantastic topic work that we have produced this week in the photos below.



### More from World Book Day.....





---

## Lyng Church of England Primary Academy

Executive Headteacher: Mrs Shannon O'Sullivan

Wensum Road, Lyng, Norwich, NR9 5RJ

Tel: 01603 872828 Email: [office@lyng.norfolk.sch.uk](mailto:office@lyng.norfolk.sch.uk) Web: [www.lyng.norfolk.sch.uk](http://www.lyng.norfolk.sch.uk)

### Diary Dates 2024/25

#### March

- 10<sup>th</sup> Y1&2 Cricket Festival at UEA
- 13<sup>th</sup> Photographer visiting for website
- 18<sup>th</sup> Parents Evening 3.30 – 5.30pm
- 19<sup>th</sup> Parents Evening 3.30 – 6.00pm
- 20<sup>th</sup> Parent SEND Café
- 21<sup>st</sup> Red Nose Day – dress in red / comic relief themed clothing
- 24<sup>th</sup> FOLS Mothers Day Shop (lunch time)
- 28<sup>th</sup> FOLS Mothers Day Shop (lunch time)

#### April

##### Easter holiday 7<sup>th</sup> – 22<sup>nd</sup> April

- 4<sup>th</sup> Last day of term
- 23<sup>rd</sup> Children return to school

#### May

##### 5<sup>th</sup> Bank Holiday – school closed

- 12<sup>th</sup> SATS week for year 6

##### Half term 26<sup>th</sup> – 30<sup>th</sup> May

#### June

- 2<sup>nd</sup> Inset Day – school closed to pupils
- 9<sup>th</sup> – 11<sup>th</sup> Year 6 to Eaton Vale
- 20<sup>th</sup> Sports Day
- 27<sup>th</sup> Reserve Sports Day (in case of wet weather on 20<sup>th</sup>)

#### July

- 18<sup>th</sup> FOLS end of term disco (village hall)
- 22<sup>nd</sup> Last day of term